

# Rare Cancers

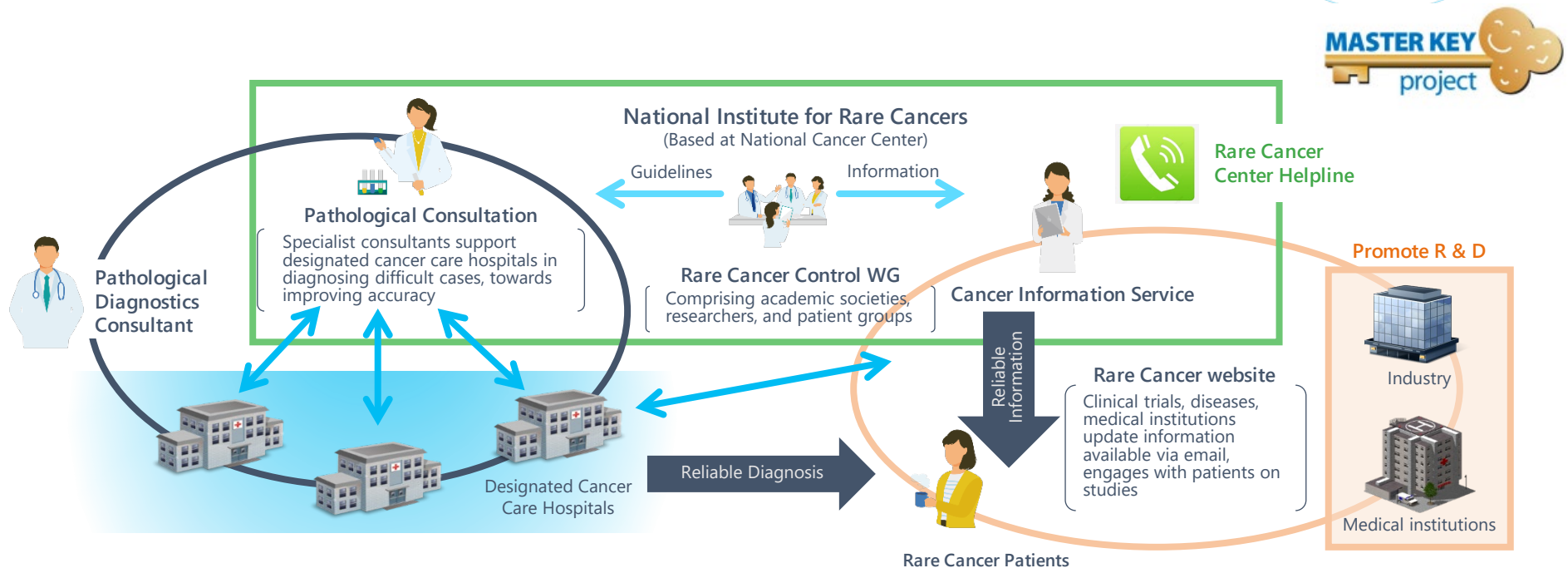


# Delivering to Patients

## - Advancing Rare Cancer Treatment and Support

### **Measurements taken for rare cancers on the following:**

- Patients' access to advanced and specialized diagnosis and treatments
- Accurate information provision and support for healthcare professionals and patients/families
- Better access to drugs and extensive treatment guidelines



Personnel Training by the Rare Cancer Pathological Diagnostic Imaging System  
(Cooperation with the Japanese Society of Pathology)