

Employment, Peer Support, Appearance Care, Suicide Prevention, Accommodating Major Life Events



Employment Support for Cancer Patients

Overview

- A survey commissioned by the Ministry of Health, Labour, and Welfare in 2015 found patients' work cessation at 40% before treatment, following cancer diagnosis. The driving force was uncertainty about the unknown, coping with treatments, work capabilities diminishing and burdening colleagues; providing accurate information and consultation services starting at diagnosis is essential.
- Since 2013, employment consultants (labor and social security attorneys) are seconded to consultation and support centers. An initiative to improve work-treatment balance for cancer patients was rolled out 2018 - 2019, boosting job retention and workplace returns with more consultation services.
- Work-treatment balance coordinators are stationed at consultation and support centers from 2020, supporting patients liaising with primary physicians and employers. The service ensures seamless cancer patient support for work-treatment balance, with clear plans set for each patient covering treatment, daily lives, and work.

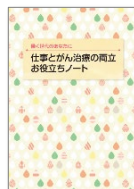
Diverse Consultation Needs

Employment (Job retention, return to work)

- Job retention support with early intervention, responding to individual needs
- Coordinating work conditions, e.g., shorter hours, accommodating treatments and managing daily lives
- Reduce anxiety, by providing information on treatments, work, and balancing lives
→ Patient consultations, support for coordination between primary and occupational health physicians
- Support upon unfair or wrongful dismissal, mistreatment by employers
- Support with work leave and social security

Initiative for cancer patients work-treatment balance
(2018-2019)

- Medical practitioners' awareness raised, more consultations/interventions
- Balance plan brochure – utilized in workplace relations
- Seminars - patients better informed/prepared for employment

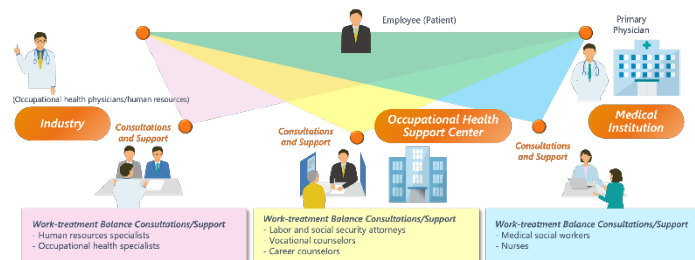


Support at Designated Cancer Care Hospitals

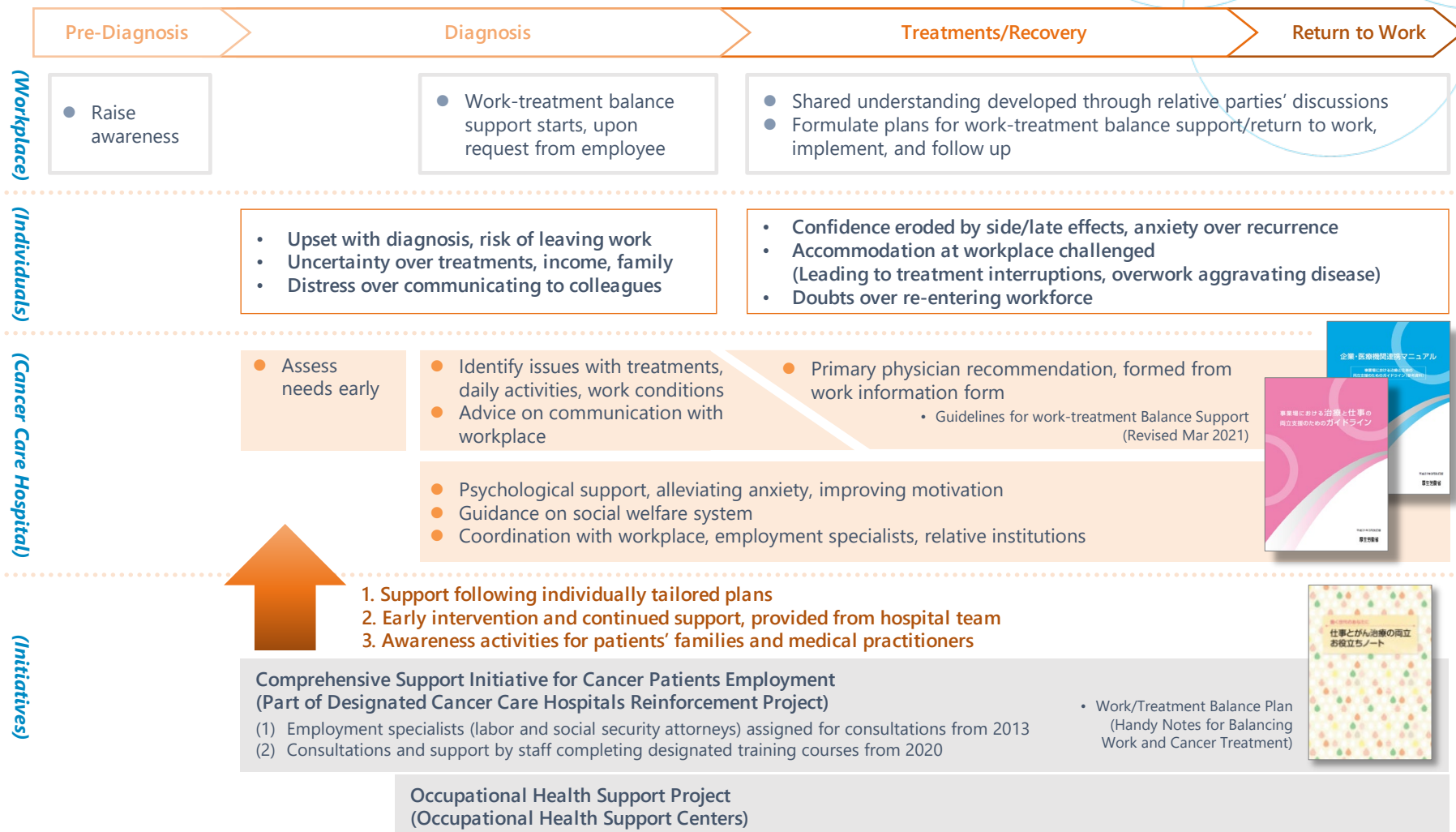
Employment Support for Cancer Patients (2013-)

The initiative supports either of the two:

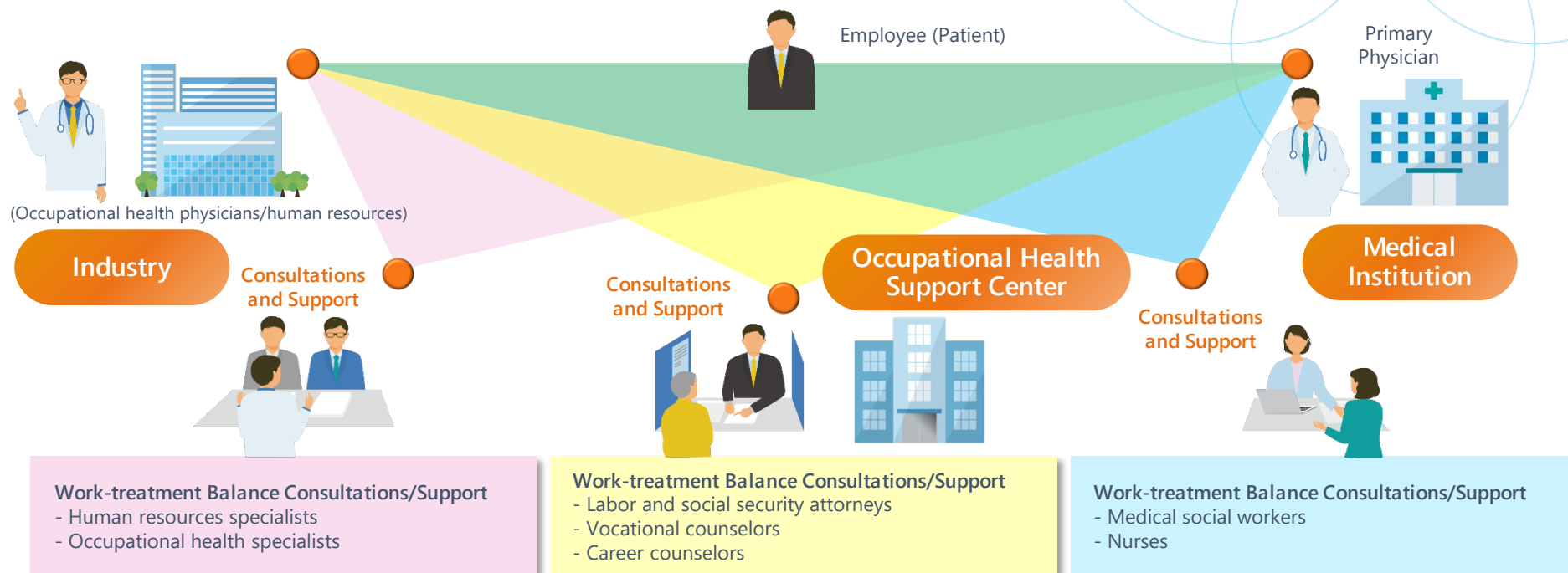
1. Assign employment specialists (labor and social security attorneys) to cancer care hospitals, providing consultations, from 2013
2. Provide consultation services for work-treatment balance improvement, by staff having completed designated courses, incorporating individual needs from diagnosis, supporting patients throughout their recovery, from 2020



Work-treatment Balance Support for Cancer Patients



Work-treatment Balance Coordinators



Expertise: Human resources, occupational health, medical practice, social security
Function: Provide consultations and support patients throughout the passage to recovery
Role: Support patients with own expertise, coordinate involved parties
 Advice on necessary adjustments incorporating treatment and work requirements and conditions, upon request

**coordinators provide advice to the patient while not representing service recipients at negotiations*

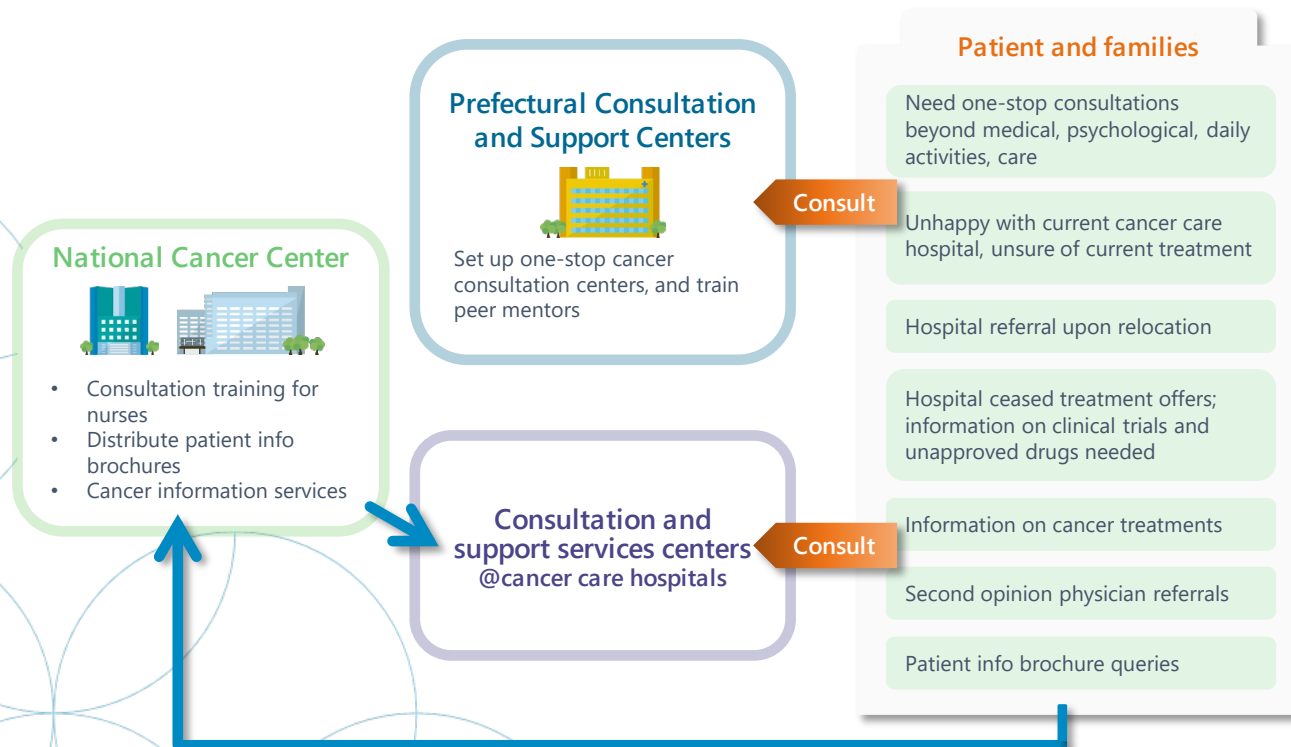
Regional Consultation and Support Centers

One-stop cancer consultation services for patients and families, on psychological issues, treatments, daily activities, care issues. Established in 15 prefectures (Jul 2023)

Costs borne by: Prefectures (50% borne by central government)

Initiative: Recruiting/training specialists providing peer support/consultations, analyzing consultations, improving access to peer networks

Regional Consultation and Support Centers



Training programs for patient volunteer mentors providing consultations



Ministry of Health, Labour, and Welfare
initiative for training Comprehensive Cancer
Consultations
(Assigned to Japan Psycho-Oncology Society)

Training course material
website: <http://www.peer-spt.org/>

Comprehensive Cancer Consultations and Support - Capacity Building

*Peer support: support for cancer patients and families by cancer patients, former patients and their families sharing experiences and discussing issues.

Past / Current state

- Programs and literature to help train patient volunteer mentors, on hosting peer networks developed under an initiative (fy2011-fy2013).
- Patient mentor training/utilization advice offered to prefectural governments (fy2019-).

Peer support policies

- **Ministry of Internal Affairs and Communications - Cancer Control Administrative Assessment (Sep 2016)**
Peer support should be provided respecting the wishes of cancer patients and their families, however, over restraint from this regard can hamper attaining its original objectives. The Ministry of Health, Labour and Welfare (MHLW) should further encourage peer support activities by establishing and revising guidelines for patient volunteer mentor training program guidelines, consulting with patient groups and relevant academic societies.
- **MHLW Conference on Future Direction of Cancer Care Provision (Oct 2016)**
Peer support activities/patient support groups to be expanded, further working with patients and former patients, by providing training on peer support.

Initiatives

Program guidelines to be updated, training offered to former and current cancer patients, Designated Cancer Care Hospitals medical staff and prefectural governments, in cooperation with patient advocacy groups /academic societies.

Training Initiative : <http://www.peer-spt.org/>

Workshop Info : <http://www.peer-spt.org/annai/>

厚生労働省委託事業 がん総合相談に携わる者に対する研修事業

がん相談支援に携わる医療者必見

がんサポートグループ 企画・運営者のための研修会

参加費 無料

現在、がん診療連携拠点病院では、医療者と患者会等が共同で運営するサポートグループ活動や患者サロンの定例開催等の患者活動に対する支援が求められ、すでにさまざまな取り組みがされています。それらが継続的ながん患者とその家族のニーズに適した支援となっているよう、質の向上を図ることが重要です。

本研修は、がんサポートグループの基本的な知識や技能を講義や動画、ロールプレイを通して実践的に学習できます。またグループワークでは、各施設のサポートグループの課題を共有し、解決策を検討します。がん患者と家族が自分らしく暮らせるためのより最適な支援的サポートグループの企画・運営をめざしましょう。

日時 2023年11月3日(金) 10:00~17:00 定員 90名 (応募者多数の場合は抽選)

開催方法 ハイブリッド開催
会場 ハーネスホール(佐賀県佐賀市 市営地下鉄広瀬通駅または国鉄佐賀駅から徒歩)
WEB Zoomミーティングを使用

対象 がん診療連携拠点病院等でがん相談支援に携わる医療者
看護師、MSW、心理職、医師、薬剤師等

申込方法 WEB上でお申し込みください。
URL <https://www.hormsai.net/doi/565821658/>
申込期間 2023年8月10日(木)~9月20日(水) 17:00

お申込・お問い合わせ先

厚生労働省委託事業
がん総合相談に携わる者に対する研修事業
日本サイコoncology学会 委託事業事務局

Tel 04-7134-6986
URL <https://www.peer-spt.org/>
Mail info@peer-spt.org

Appearance Care

● **Definition:**

Medical, cosmetic, and psychosocial care to address changes in appearance* to alleviate distress caused

* Changes in appearance caused by treatments do not necessarily require remedies.
(Appearance support center - National Cancer Center Hospital website)

● **The Need**

More cancer patients maintain social lives during treatment, thanks to advances in treatment.
It is important to **provide support in medical settings** adjusting to changes in appearance.

Treatments	Typical changes in appearance
Chemotherapy	Loss of hair (scalp, eyelashes/brows), hand-and-foot syndrome, skin pigmentation, nails cracking/peeling/ colors changing
Molecularly targeted therapy	Hand-and-foot syndrome, acne-like rash, dry skin, nail inflammation
Radiation therapy	Radiation dermatitis
Surgery	Surgical scars, loss of body parts, swelling

● **Study Projects**

	Period	Research Topic
Comprehensive Research Initiative for Promoting Cancer Control - MHLW Health Labour Sciences Research Grant	2017-2019	Equity in cancer patient appearance care, and developing training programs for leaders
	2020-2022	Implementing high-quality appearance care for cancer patients
	2023-	Implementation of supportive care in clinics, factors impeding/encouraging its advancement
AMED	2014-2016	Analysis of skin problems caused by cancer treatments, and establishing standard care
	2017-2018	Establishment of standardized methods of care for acneiform dermatitis caused by molecular standard treatment drugs

Better consultations for living with cancer

(Appearance Support Model Project)

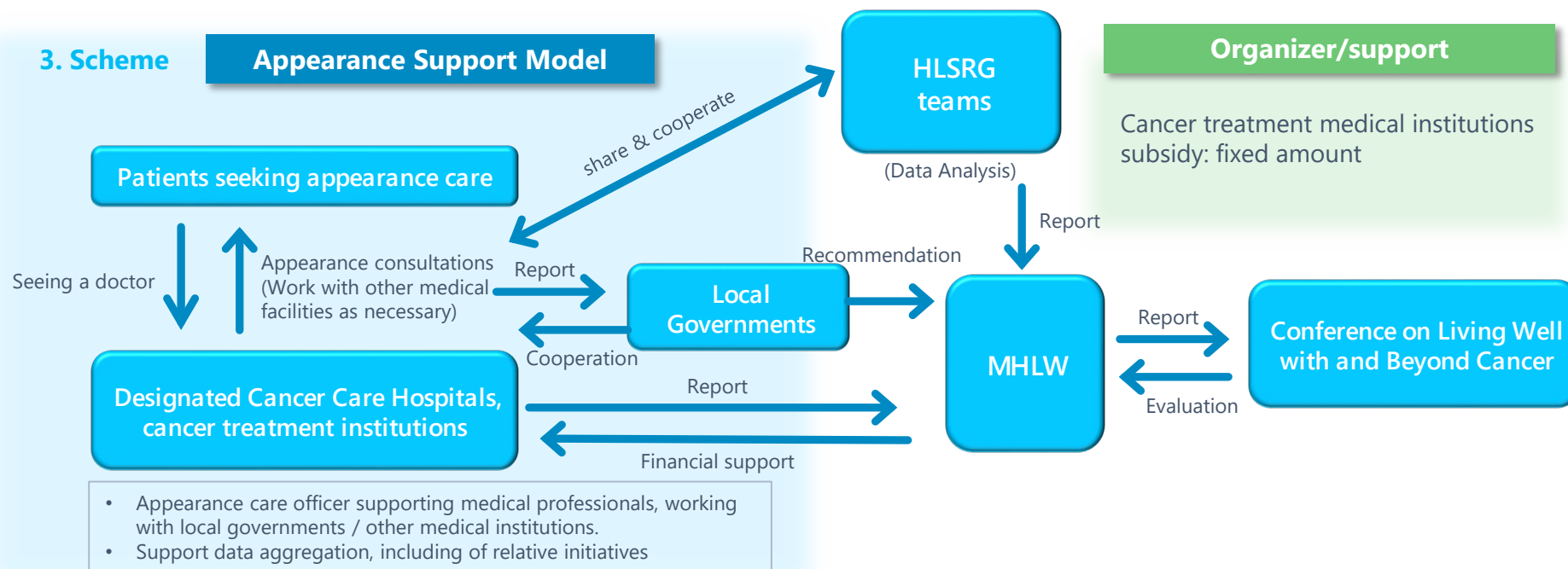
1. Purpose

- Treatments can change one's appearance, affecting social life. Support at medical institutions to help patients cope is necessary.
- Support to be provided with medical institutions and local governments working together. Means tried and proven effective will be deployed throughout the nation.

2. Summary

- At Designated Cancer Care Hospitals and cancer treatment institutions, healthcare professionals will provide information and consultations to cancer patients requiring appearance care. The effect will be measured.
- MHLW Health Labour Sciences Research Grant (HLSRG) teams to be deployed in research and analysis.

3. Scheme



Appearance Care Information Brochures

- Leaflet *for cancer patients*

Advice on patients' interests
(hair, fingernails, skin, eyebrows/eyelashes)

Editors: Yokohama City/Yokohama medical practitioners/
National Cancer Center Hospital

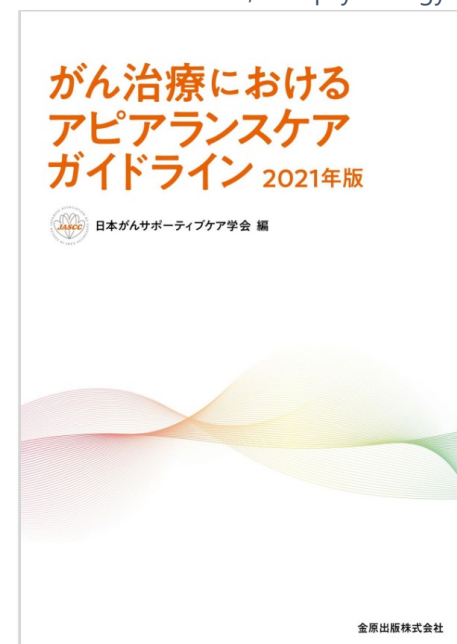


<https://www.city.yokohama.lg.jp/kurashi/kenko-iryo/iryo/gan/taisaku/appearance.html>

- Treatment guide *for cancer care staff*

Evidence on chemotherapy, molecular targeted therapy, radiotherapy, and routine cosmetics

Authors: specialists in medicine, nursing, pharmacology, cosmetic science, and psychology



"Guide to Appearance Care for Cancer Patients" 2021 edition
Edited by: Japanese Association of Supportive Care in Cancer

Suicide Prevention

Designated Cancer Care Hospitals Guidelines

Designation requirements

- Utilization of a set guide to control suicide risks among cancer patients, spelling out specific responses and means of working with relative teams
- Information sharing schemes among relative specialists
- Services secured from local medical institutions if no in-house psychiatry / psychosomatic medicine

4th Basic Plan to Promote Cancer Control Programs

(Excerpt)

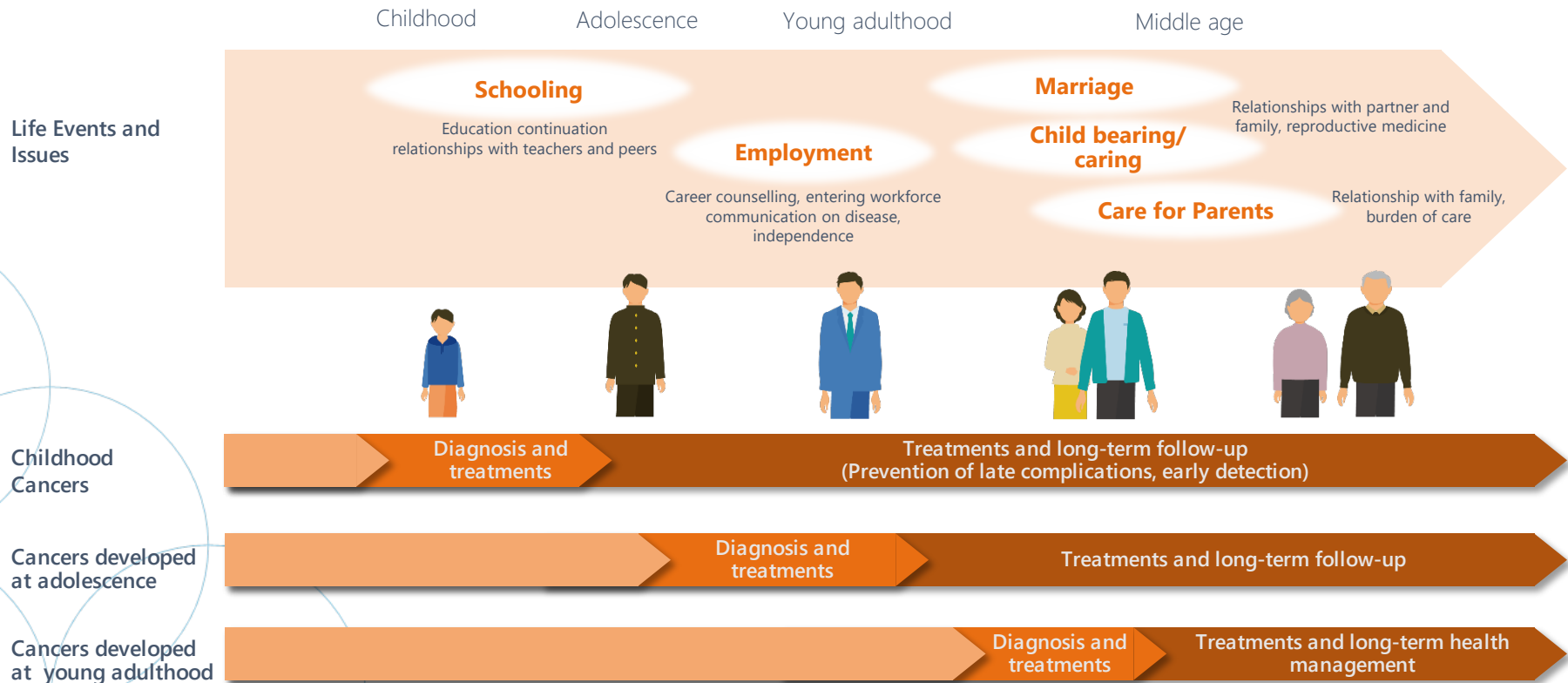
The Government of Japan is to deliberate on training, information provision and consultation support for healthcare staff to acquire accurate knowledge, towards preventing post-diagnosis suicide of cancer patients.

The government is also to comprehend suicide risks of cancer patients and its context, then to deliberate necessary action.

Accommodating major life events (Childhood and AYA)

Extract from submissions to Cancer Control Promotion Council – 3 Nov 2021

- Involving wide range of life stages; developing early with possible complications much later, post treatment follow-up is required long-term.
- Schooling, employment, reproduction requirements vary by age group, psychosocial conditions differ; needs are diverse.



Childhood and AYA Generation Cancer Patients and Families - Support Initiatives

Extract from submissions to Cancer Control Promotion Council – 3 Nov 2021

Needed initiatives	Major efforts
(1) Inpatient classes/accommodation	<ul style="list-style-type: none"> Improve Designated Hospitals for Childhood Cancers facilities
(2) Education support	<ul style="list-style-type: none"> Bolster scheme for continued education of hospitalized senior high school students
(3) Consultations and support for accommodating life events	<ul style="list-style-type: none"> Improvement in long-term follow-up for children and AYA generation patients Coordinated support from hospitals specializing in childhood and adult cancers (Training counsellors, work with consultation and support units of liaison groups of cancer care hospitals)
(4) Employment Support	<ul style="list-style-type: none"> Workforce entrance support for cancer patients (pilot model 2013-, national rollout 2016-) Comprehensive support for employment of cancer patients (2013-, modified 2020)
(5) Palliative Care	<ul style="list-style-type: none"> Improvement of pediatric palliative care teams

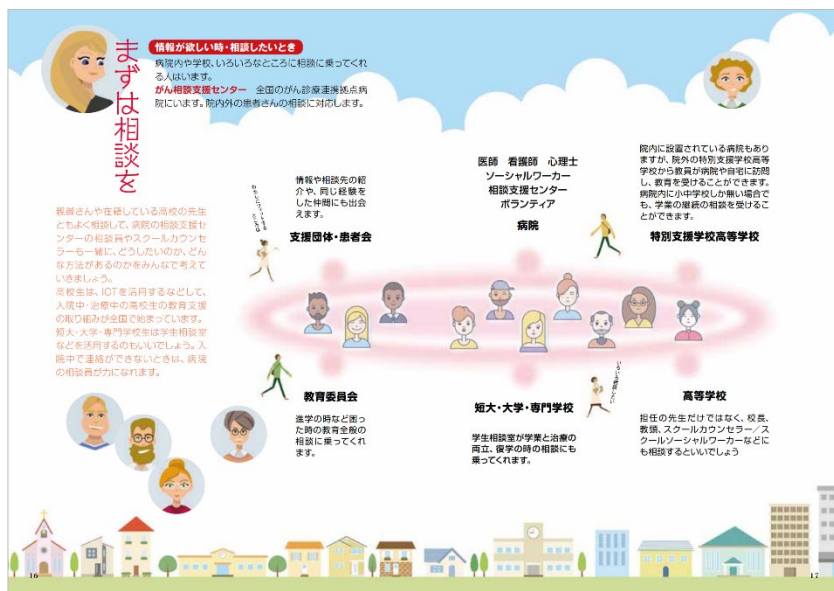
● MHLW Health Labour Sciences Research Grant Projects

Period	Research Topic
2018-2020	Establishment of a comprehensive care provision system for cancer patients of adolescent and young adult (AYA) generation
2019-2020	Current state and future of at-home care for childhood cancer patients
2019-2021	Development/implementation of mental health care and high school education to AYA generation cancer patients
2020-2022	Establishment of long-term follow-up through collaboration between childhood cancer centers, and adult diagnosis and treatment departments
2020-2022	Equalizing psychological support for preserving fertility for childhood and AYA generation cancer patients and establishing a system for secure, long-term specimen storage: providing patient-centered cancer treatment

Support for AYA Generation Cancer Patients and their Families - Information

● Booklet for families of AYA generation cancer patients

AYA: Adolescent and Young Adult



About AYA generation/ AYA generation cancers/ AYA generation anxieties/ friends, partners, and family/ school/ work/ sex and reproduction/ financial uncertainties/ post-treatments/ families and siblings facing distress and concerns

2015-2017 MHLW Health Labour Sciences Research Grant (HLSRG) project "Research regarding the future shape of comprehensive cancer control for the adolescent and young adult (AYA) generation"
URL: <https://ayateam.jp/wp-content/uploads/2019/04/AYA.pdf>

● Fertility preservation therapy - information provision, consultation and support

To breast cancer patients who wish to have children in the future



To patients who are starting cancer treatment



Cancer and pregnancy consultations (for consultation staff)



2016 MHLW HLSRG project "Evidence regarding fertility in long-term survivors of childhood and youth cancer and research related to the creation of a fertility health network"
URL: <http://www.j-sfp.org/ped/index.html>

● Nationwide network - AYA cancer support team

Establishing coordination between multidisciplinary support teams in designated cancer care hospitals and regional networks

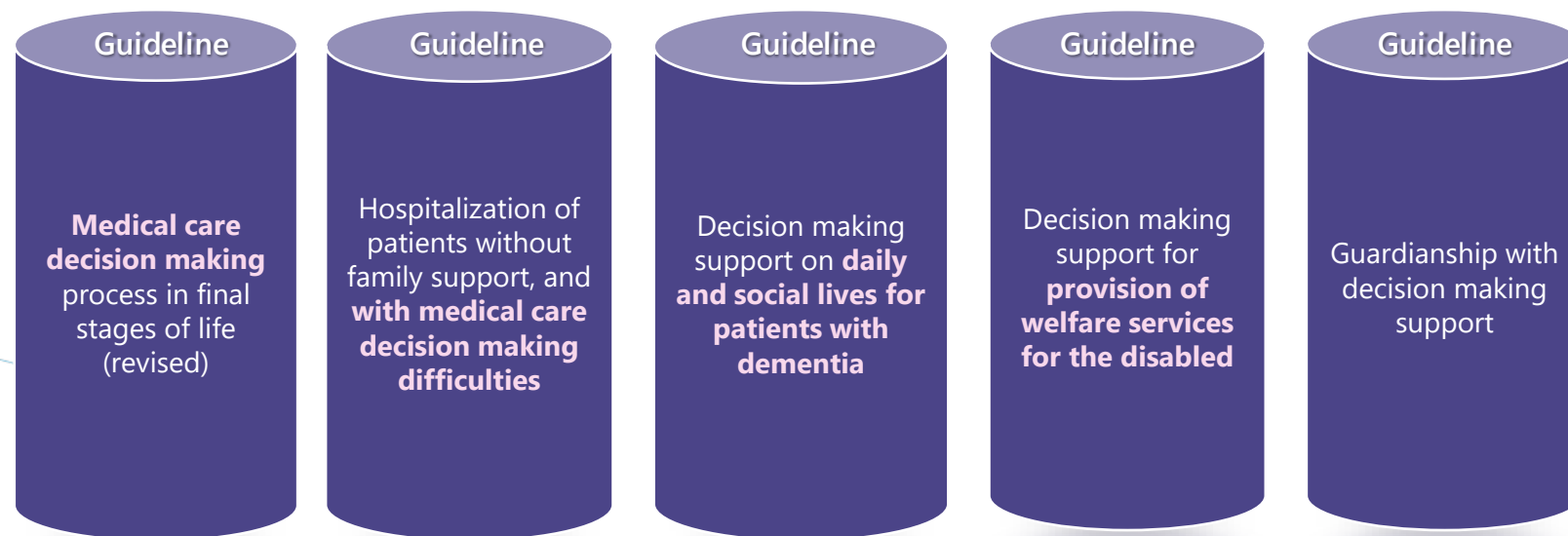


2018-2020 MHLW HLSRG project "Research regarding the establishment of a comprehensive care provision system for cancer patients in the adolescent and young adult (AYA) generation"
URL: <https://ayateam.jp/>

Decision-making Support

Partially revised from documents submitted to the Conference on Living Well with and Beyond Cancer (23 Dec 2021)

- Convention on the Rights of Persons with Disabilities
- Act Promoting Adult Guardianship Use
- Basic Plan for the Promotion of Adult Guardianship Use (Cabinet Decision, Mar 2017)



Source: Health Labour Sciences Research Grant (MHLW Scientific Research)
Excerpts from "Research on developing simple and effective decision-making support initiative, to improve the Geriatric Cancer Care Quality" group.

Decision support guide for geriatric patient care

Partially revised from documents submitted to Conference on Living Well with and Beyond Cancer (23 Dec 2021)

- Invite patients to decide on every major issue, including dementia patients
- Garner support from comedicals when facing difficulty making decisions
- Respect individual values
- Explain in relaxed spaces, in the presence of friends and family
- Lay out options in plain language, encouraging responses
- Take cues from nods, hand gestures, and smiles
- Invite patient to explain their understanding
- Check multiple times, with ample intervals, from multiple staff

(https://www.ncc.go.jp/jp/epoc/division/psycho_oncology/kashiwa/research_summary/050/020/index.html)

Source: Health Labour Sciences Research Grant (Comprehensive Research Initiative for Promoting Cancer Control - MHLW Scientific Research)
Research on the development of a simple and effective decision support program to improve the quality of cancer care for geriatric cancers.

