

# Consultation Services and Cancer Information Dissemination



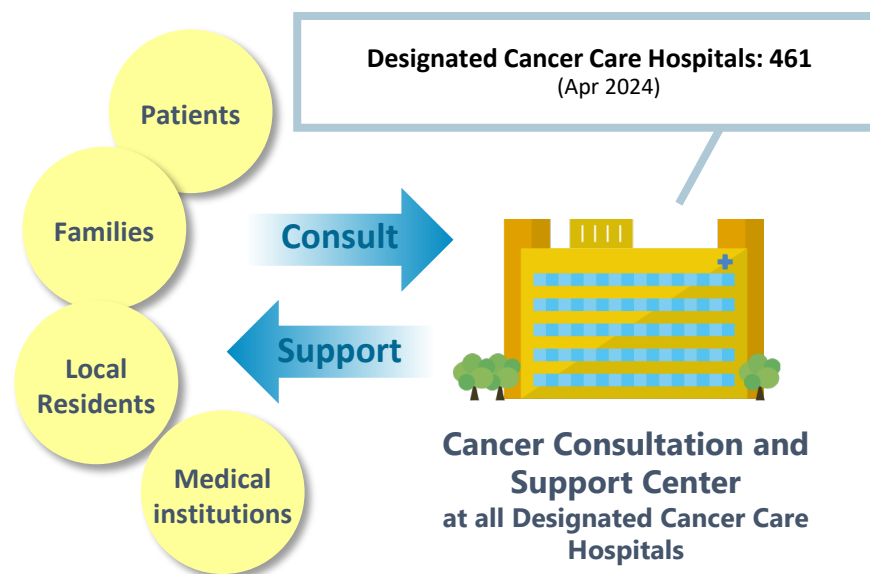
# Cancer Consultation and Support Centers

## At Designated Cancer Care Hospitals

- Consultations available at designated cancer care hospitals nationwide
- All patients and families (regardless where care is received), local residents/medical institutions eligible
- Consultations by Hospital and local professionals
- Consultation team including one exclusive, and one primarily engaged staff who have completed three units of designated training course organized at the National Cancer Center
- At local cancer hospitals, one out of two staff may forego completing training course 3<sup>rd</sup> unit

### Primary Responsibilities

- Provision of cancer prevention/screening information, general care information
- Consultations on managing, living with cancer
- Support for patient activities
- Information provision on collaborations between cancer medicine institutions in the region
- Improving patient support services



# Cancer Consultation and Support Center Services

*(Excerpts from Designated Cancer Care Hospitals guidelines)*

## **1. Information provision on prevention and screening**

## **2. Provision of cancer briefs**

- a. Cancer pathophysiology and standard therapy
- b. Cancer types for which treatments are available at own institution/cooperating medical institutions
- c. Lung cancer and mesothelioma due to asbestos
- d. ATL, an HTLV-1-related disease
- e. Referrals to physicians/medical institutions for second opinions
- f. Geriatric cancer treatments
- g. Treatments and patient decision-making

## **3. Dissemination of information on living with cancer, consultations provision**

- a. Cancer patients' care and daily life
- b. Employment (aligned with Occupational Health Support Center, Employment Security Office)
- c. Financial support
- d. Long term follow up of childhood cancers
- e. Appearance related consultations

## **4. Others**

- a. Provision of information on collaborations between cancer medicine institutions in the region
- b. Support of patient support activities co-organized by medical staff and patient groups
- c. Capacity building, for improving consultations services
- d. Consultations on relative matters on support

**If not provided at own facility, referrals are encouraged for:**

- 1. Cancer genomic medicine consultations
- 2. Rare cancers consultations
- 3. AYA generation cancer patients' treatment, schooling, employment consultations
- 4. Fertility preservation and cancer treatment consultations
- 5. Consultation services for patients with disabilities

*(Excerpts from Designated Cancer Care Hospitals guidelines)*

## **II Requirements for Designated Regional Cancer Treatment Center**

(d) Patients' plans for schooling, employment, fertility preservation, support on appearance care to be confirmed, and consultation services established at either the main care institution or affiliated institutions. An AYA Generation multidisciplinary support team is best established.

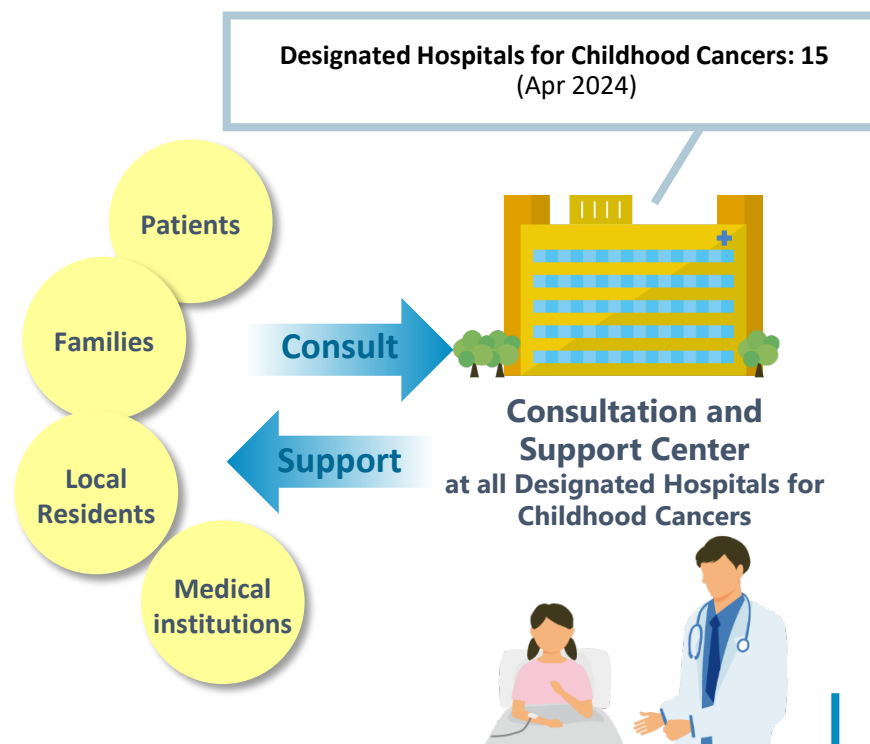
# Consultation and Support Centers

## At Designated Hospitals for Childhood Cancers

- Consultations available at designated hospitals for childhood cancers
- All childhood and AYA generation cancer patients and their families, local residents eligible
- Consultations by hospital and local medical professionals, nurses, social workers preferred
- Consultation team including one staff primarily engaged in service, who has completed the training course at National Cancer Center and at the National Center for Child Health and Development

### Primary Responsibilities

- Provision of childhood cancer treatment information, such as clinical status and standard therapies
- Consultation and support on development and recovery of childhood cancer patients
- Consultations and support on education for childhood cancer patients
- Support for patient activities, such as events coorganized by medical staff and patient groups, and cancer support groups
- Consultations for AYA generation cancer patients\* on treatments, education, employment, and reproductive medicine
- Referrals to designated cancer care hospitals for the provision of the above



# Cancer Consultation and Support Centers Services

*(From designation requirements for Designated Hospitals for Childhood Cancers - Aug 2022)*

- a. Provision of childhood cancer care information, such as pathophysiology of cancer and standard therapies
- b. Information accumulation/provision on care at Cooperative Hospitals for Childhood Cancers and by medical professionals including specialties and experience of medical practitioners
- c. Second opinion referrals to doctors
- d. Consultations/support on development, education, schooling, employment and care for childhood cancer and Adult and Young patients (or referrals when not available in-house)
- e. Consultations/support on cancer care and reproductive medicine
- f. Consultations/support on long term follow up
- g. Consultations/support on cancer genomic medicine
- h. Consultations/support on appearance care
- i. Support for patient families, including patient siblings
- j. Support for patient activities, such as events coorganized by medical staff and patient groups, and cancer support groups
- k. Assist Cooperative Hospitals for Childhood Cancer and local medical institutions with consultation and support
- l. Consultations on relative matters on support



# Cancer Information Dissemination



## *Institute for Cancer Control*

*Host: National Cancer Center*

(<http://ganjoho.jp>)

- Content
  - Briefs on various cancers
  - Diagnosis and treatment
  - Lifestyles and recovery
  - Prevention and screening
  - Cancer statistics
  - Cancer Care Hospitals

## *Rare Cancer Hotline*

- Provides consultations to patients and their families, and also to doctors, nurses, social workers, and medical professionals
- Nation's Hotlines list  
host: National Cancer Center website  
(<https://www.ncc.go.jp/jp/rcc/hotline/index.html>)

## *Childhood Cancer Hotline*

*Host: National Center for Child Health and Development  
Children's Cancer Center*

(<https://www.ncchd.go.jp/hospital/about/section/cancer/hotline.html>)

- Provides consultations on treatments to childhood cancer patients and their families

